



**IWONA KLONOWSKA**

WSB University, Poland

ORCID iD: [orcid.org/0000-0002-3320-5649](https://orcid.org/0000-0002-3320-5649)

**KAROLINA WALANCIK**

WSB University, Poland

ORCID iD: [orcid.org/0000-0002-9988-0145](https://orcid.org/0000-0002-9988-0145)

## CONTACTS OF PEOPLE SERVING PRISON SENTENCES DURING THE COVID-19 PANDEMIC WITH THEIR FAMILIES AND LOVED ONES

## ABSTRACT

Contacts of persons serving prison terms with their family, relatives and friends allow the fulfillment of specific needs, constituting one of the most important penitentiary activities. These contacts carried out on a daily basis during the Covid 19 pandemic were limited and, in fact, impossible for some time. Family contacts allow you to maintain bonds, thus reducing the symptoms of isolation. They are an important factor indicating success in the process of social rehabilitation and readaptation. The aim of the article is to present the results of the study and analyzes carried out for the needs of the Local Council for Social Readaptation and Assistance to Convicts in Katowice. The authors were members of the research team as part of research on: Knowledge of convicts in the field of post-penitentiary assistance and their contacts during the Covid-19 pandemic.

**KEYWORDS:** *contacts, imprisonment, Covid-19 pandemic, family*

## INTRODUCTION

Erving Gofman's approach to a total institution indicates the place of residence of people cut off for some time from the rest of society and leading a formalized lifestyle (Gofman, 2011, p.14). If cut off, they are deprived of the possibility of contact, and certainly significantly limited. It was common to deprive prisoners of contacts at the beginning of the creation of the Philadelphia (Pennsylvania) cell system due to the establishment of the prison in Philadelphia in 1790 and the Auburn system (from the prison in Auburn established in 1816). A diabolical idea for the loneliness and silence of people serving prison sentences – normality. The convicts were deprived of the right to see any people, including their own families. The only person who visited the prisoners was a priest (Machel, 1994, p. 41). Nowadays, this problem is regulated by law. The issue of contacts of persons serving a prison sentence with their family, relatives and friends is regulated by the Act of June 6, 1997, Executive Penal Code, indicating that the convict should be allowed to maintain bonds through visits, correspondence, telephone calls, parcels

and money orders. The scope and method of contacts depend on the type and type of prison where the convict is serving his sentence, as well as on the requirements for individual influence, with the exception of the right to receive parcels (Journal of Laws of 2023, item 127). The cell system should be considered progressive in the evolution of the creation of the penitentiary system, the loneliness of inmates during the execution of imprisonment, the order of silence, and severe disciplinary penalties used in this system did not favor the process of returning convicts to social functioning after the end of serving their sentence (Machel, 2003, p. 10 – 11). Communication, contacts with family and loved ones conducted and maintained in any form are valuable in the socialization process (Walancik – Ryba, 2021, pp.77-78).

## **CONTACTS OF PEOPLE SERVING PRISON TERMS WITH THEIR FAMILY AND LOVED ONES**

Contacts of incarcerated people with family members and other close ones are a basic factor in the process of re-adaptation, re-rooting in the family and social environment. After contact with loved ones, prisoners' negative feelings decrease: anger, malice and hostility (Bachar, Guetzkow, 2022), as well as cases of aggressive behavior towards other prisoners are less frequent (Ellis, Grasmick, Gilman, 1974, pp. 16–43). Contacts with loved ones, just like the work of convicts, have the potential for social reintegration (Roch Miszewski, Małekowska-Kozaryna, 2023, p.137). According to Grant Duwe and Valera Clark almost half of the prisoners were visited by a friend, almost a third by their mother, and then by a sibling (Duwe Clark, 2011, pp. 1-26).

In the case of contacts between convicted parents and their offspring, according to Joseph Murray, 68% of imprisoned women and just over half of men exchanged correspondence with their children at least once a month. 54% of women and 42% of men talked to their children by phone at least once a month. 45% of women and 42% of men were visited by a child in prison (Murray, 2005. pp. 442–492). It is worth paying attention to the research conducted among convicted men in 2015 by Joanna Knapik and Hanna Przybyła-Basista. Telephone contact turned out to be important, 80% of fathers,

almost three-quarters corresponded with the child, while just over half of fathers experienced visits with their offspring (Knapik, Przybyła-Basista, 2015, pp. 183–202). As Iwona Klonowska and Marek Walancik write, undoubtedly the family is usually the most important and often the only support for prisoners and former convicts, which is why contacts with it are so important (Klonowska, Walancik 2023, pp. 193-210). According to research conducted by Aneta Jarzębińska, convicts communicated with members of their families and other relatives, especially by telephone (this form was used to communicate with a total of 1,784 people), and then in the form of visits and correspondence. The most common source of contact was the mother (232 people, i.e. 67.2% of the study participants, had contact with her), followed by a *friend from freedom* (n=194 respondents; 56.2%). Next, the convicts indicated contact with their siblings (n=164; 47.5% of study participants maintained contact with their sister, and 149 and 43.2% with their brother (Jarzębińska, 2023. p.31-35). The situation of loneliness and isolation was intensified during Covid-19 (Klonowska, 2023), when visits to feed facilities were practically suspended (Journal of Laws of 2021, item 861, as amended. Outbreak of the Covid-19 pandemic caused by the SARS-CoV-2 virus V2 disorganized public space globally and forced the introduction of many restrictions, including in the penitentiary system. The Regulation of the Minister of Health in Poland of March 20, 2020 introduced a state of epidemic in the territory of Poland due to SARS-Co-V2 virus infections. restrictions. Pursuant to § 6 section 1 of this regulation, penitentiary units were subject to restrictions (Journal of Laws 2020, item 491). Regardless of the restrictions introduced, detailed regulations were made by the administration of prisons and detention centers in order to take appropriate measures to ensure proper safe functioning of the institution.

## METHODOLOGY

The aim of the study was to diagnose prisoners in terms of their contacts with family and other close people (forms, frequency, assessment) during the Covid-19 pandemic. The purpose of the study formulated in this way obliged us to implement the project in a normative paradigm (Rubacha, 2011, p. 311). The research was conducted using the diagnostic survey method (Babbie, 2001, p. 268) using a questionnaire.

For the purposes of the study, a research problem was formulated: How contacts between people serving prison sentences with their family and other close people are implemented during the Covid-19 pandemic. The selection of people for the research sample was voluntary, based on the availability of the respondents (Babbie, 2008, p. 204). The respondents agreed to participate in the study.

The following characteristics were important in the research: gender, age, place of residence, education, prohibited act, time remaining to serve the sentence, and classification subgroup.

The study covered 122 prisoners, 80% of them were men, 20% were women. All women had no more than 1 year left in their sentences (68% – no more than 6 months). In the case of men, this applies to 80% and 33% of respondents, respectively (Klonowska, Walancik 2023 pp.196-197).

A prohibited act is:

- crimes against health and life, Art. 148 – 162 of the Penal Code,
- crimes against security in communication, Art. 173 – 180a of the Penal Code,
- crimes against sexual freedom and decency, Art. 197 – 204 of the Penal Code,
- crimes against family and care, Art. 206 – 211a of the Penal Code,
- crimes against the activities of state institutions and local government, Art. 222 – 231b of the Penal Code,
- crimes against property Art. 278 – 295 of the Penal Code,
- an offense specified in the Act on Counteracting Drug Addiction.

The convicts participating in the study were classified into the following subgroups:

- P-1 serving sentence for the first time/closed institution,
- P-2 serving sentence for the first time/semi-open facility,
- P-3 serving sentence for the first time/closed institution,
- R-1 penitentiary recidivists/closed institution,
- R-2 penitentiary recidivists/semi-open facility,
- R-1/Z penitentiary recidivists/closed facility/standard system,
- R-2/P penitentiary recidivists/semi-open facility/programmed operation system.

Time remaining until the end of the penalty:

- up to 6 months,
- 1-2 years
- 2-3 years
- over 3 years.

The District Director of the Inspectorate of the Prison Service in Katowice, OJSW, and the inmates consented to the research. The research and analyzes were carried out in accordance with ethical principles. Before the main research, pilot research was carried out among 20 inmates (Presser, Blair, 1994, pp. 73 – 104).

The research was conducted at the turn of 2021/2022 in Poland in prisons that are part of the District Inspectorate of the Prison Service in Katowice. The main research was preceded by a pilot questionnaire among 20 inmates (Presser, Blair, 1994, pp. 73 – 104). The majority of respondents were aged 31-50, including nearly 40% aged 31-40. Only two people (1.6%) were under 21 years old. 30% each were people from cities with up to 100,000 inhabitants. or 100-200 thousand inhabitants, 20% each – from villages or towns with 200,000 inhabitants. and more. Most respondents had vocational education – 39.6%. The second group consisted of people with secondary education – 21.3%. 16.4% of respondents had incomplete primary or lower secondary school education, and 8.2% had higher education.

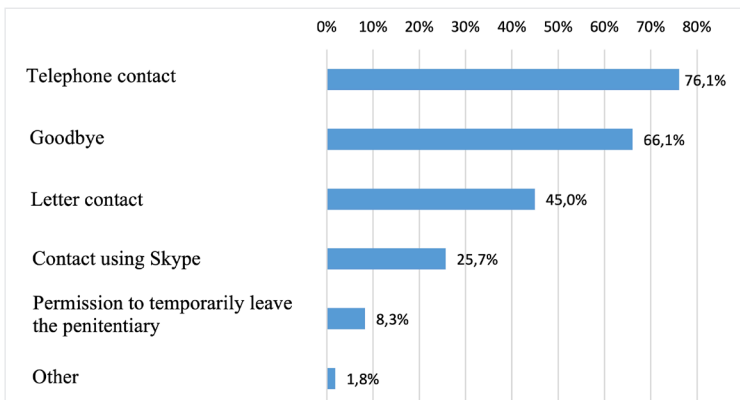
The test data were analyzed using the IBM SPSS-28 program. The formulated research objectives obliged to perform a univariate analysis in the form of a calculated

percentage share and a bivariate analysis using the assessment of the significance of the relationship, the  $\chi^2$  test of independence to show the relationship between selected qualitative variables and the V-Cramer coefficient measuring the level of dependence between two qualitative variables. To compare groups, the Mann-Whitney U test and the Kruskal-Wallis test (for more than 2 groups) were used.

## CONTACTS OF PEOPLE SERVING PRISON SENTENCES WITH THEIR FAMILY AND LOVED ONES DURING THE COVID-19 PANDEMIC

Family, professional and friends contacts in local communities are crucial in the socialization process. Socialization is the entire process of acquiring mental dispositions under the influence of the social environment that make an individual capable of living in a civilized society. It shapes a person's personality and prepares him or her to live in a community, enables communication and intelligent action within it, and teaches how to behave in order to achieve life goals (Szczepański, 1972, p. 94). In the case of isolation resulting from serving a prison sentence, the scope of contacts is limited but not impossible. Data on the forms of contact used by prisoners before the start of the Covid 19 pandemic are presented in Figure 1.

**Figure 1.** *Forms of contact used by prisoners before the start of the pandemic (in %, n = 122)*



**Source:** own research

Before the pandemic began, three out of four inmates used telephone contacts (Fig. 1), and approximately 2/3 of them used visits. Nearly half of the inmates pointed to the letters, and every fourth – to the Skype messenger. Let us add that before the pandemic, 11% of respondents did not use any forms of contact, 30% – used one of them (usually visits or telephone contact). 43% of all respondents used both telephone contacts and visits. The *other* answers included: *I didn't use it, I wasn't imprisoned, I didn't use it because I was free, it wasn't there, none.*

Opinions in this respect are similar for women and men (for the entire set  $\chi^2(6) = 6.691, p = 0.350$ ). However, age is important (for the entire set  $\chi^2(18) = 31.156, p = 0.028^{**}$ ), and specifically, people aged 31-40 years (81.4%) used visits significantly more often than those aged 41-50 years (48.4%,  $p = 0.017^{**}$ ), and the differences between age groups are not statistically significant. Education also differentiated these statements (for the entire set  $\chi^2(6) = 13.108, p = 0.041^{**}$ ), and specifically, letters were more often used by people with secondary or higher education (58.8%) than with at most vocational education (39.2%),  $p = 0.057^*$ . Similar conclusions apply to the place of residence (for the entire set  $\chi^2(6) = 14.947, p = 0.021^{**}$ ).

Comparing those who previously lived in the city and the countryside, it can be noticed that inmates from the first group indicated contact via letters (51.2% vs. 22.7%,  $p = 0.017^{**}$ ) and Skype (30.2% vs. 9.1%,  $p = 0.043^{**}$ ). In general, these contacts were not differentiated by marital status (for the entire set  $\chi^2(6) = 6.691, p = 0.216$ ), although it can be noticed that people in a relationship were more likely to contact them by telephone (88.6% vs. 67.7%,  $p = 0.012^{**}$ ). We observe significant relationships between prisoners participating in at least one of the two programs (for the entire set  $\chi^2(6) = 18.875, p = 0.004^{***}$ ) – they used visits significantly more often than those who did not participate (77.0% vs. 52.1%,  $p = 0.006^{**}$ ) and Skype (34.4% vs. 14.6%,  $p = 0.019^{**}$ ). People from the P-2 and R-1 classification subgroup used telephone contact significantly more often than those from P-1 (88-89% vs. 43%), while people from the P-2 subgroup used visits less frequently than the others (only 46% compared to even 86% for P-1). As for the time remaining to serve the sentence, the differences are not statistically significant (for the entire set  $\chi^2(18) = 17.920, p = 0.461$ ).



Among the respondents, visits were most frequently visited by inmates sentenced for crimes against property, health and life (88% of them), and the least frequently (approximately half) by inmates convicted of crimes against family and care. Only individual persons with a conviction for crimes against family and care, property and crimes specified in the Act on Counteracting Drug Addiction indicated permission to temporarily leave the premises of the penitentiary unit.

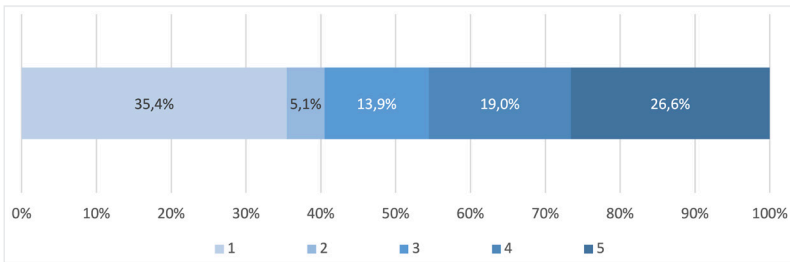
From a research point of view, and above all, maintaining family ties, the importance of contact was the frequency of contact. Data on the frequency of contact are presented in Table 1.

**Table 1.** *Frequency of forms of contact used by prisoners before the start of the pandemic (in %)*

Specification	Response rate (total)			Response rate (after omitting missing answers)		
	Telephone	Postman	Skype	Telephone	Postman	Skype
	n = 122			n = 110	n = 81	n = 61
I dont use it	2,5	13,9	18,9	2,7	21,0	37,7
1-2 times a month	3,3	27,0	6,6	3,6	40,7	13,1
3-5 times a month	4,9	17,2	10,7	5,5	25,9	21,3
More than 5 times a month	8,2	4,9	11,5	9,1	7,4	23,0
Every day	71,3	3,3	2,5	79,1	4,9	4,9
No response	9,8	33,6	50,0	x	x	x

**Source:** own research

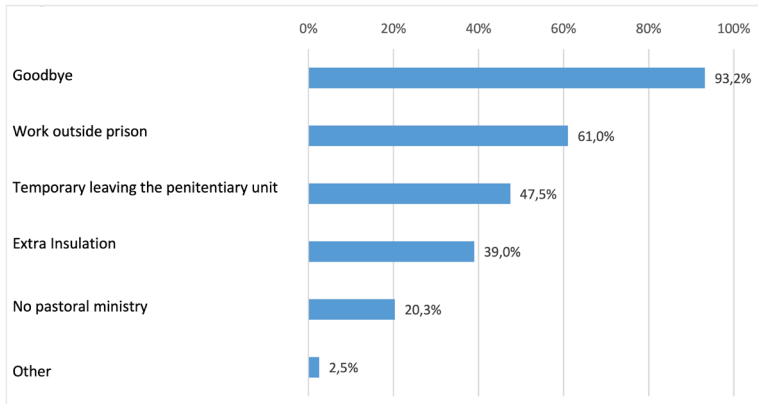
The frequency of contact varied depending on its form. Telephone contacts were the most regular – 71% of prisoners had them every day. About one in ten people contacted others by phone no more than five times a month. Daily contact via letters was chosen second by 3.3%. The frequency of contacts via Skype was the lowest. However, if it was already used, every fourth person did it more than 5 times a month. We were asked how prisoners using Skype assessed the contacts it made, as illustrated in Figure 2.

**Figure 2.** Assessment of contacts via Skype (in %, n = 79)

**Source:** own research

Prisoners using Skype were equally satisfied with it (nearly half of the ratings were 4-5) and dissatisfied (40%, including 35% of the ratings were very low) – Fig. 2. Prisoners using Skype in a similar manner were satisfied with it (almost half of the ratings were 4-5) and dissatisfied (40%, including 35% of the ratings were very low) – Fig. 2. The rating of women is statistically significantly higher than that of men (in the Mann-Whitney test  $Z = -2.131$ ,  $p = 0.033^{**}$ ) – answers 5 were given by almost every second woman compared to every fifth man, 70% of women gave answers 4-5 (40% of men) while almost 40% of men gave the lowest rating (versus every fourth women). Single people rated it better than those in a relationship (in the Mann-Whitney test  $Z = -1.668$ ,  $p = 0.095^*$ ). These opinions are not significantly differentiated by age (in the Kruskal-Wallis test  $H(3) = 4.939$ ,  $p = 0.176$ ), education (in the Mann-Whitney test  $Z = -0.742$ ,  $p = 0.458$ ), place of residence (in the Mann-Whitney test  $Z = 0.767$ ,  $p = 0.443$ ).

In the opinion of inmates, the COVID 19 pandemic has affected people in isolation. First of all, it affected vision (mentioned by 93% of respondents). Nearly two out of three people also indicated that they worked outside the prison, and every second person – that they temporarily left the premises of the penitentiary facility. The effects of the COVID 19 pandemic on a person in isolation are illustrated in (Figure 3).

**Figure 3.** *The effects of the COVID 19 pandemic on a person in isolation (in %, n = 122)*

**Source:** own research

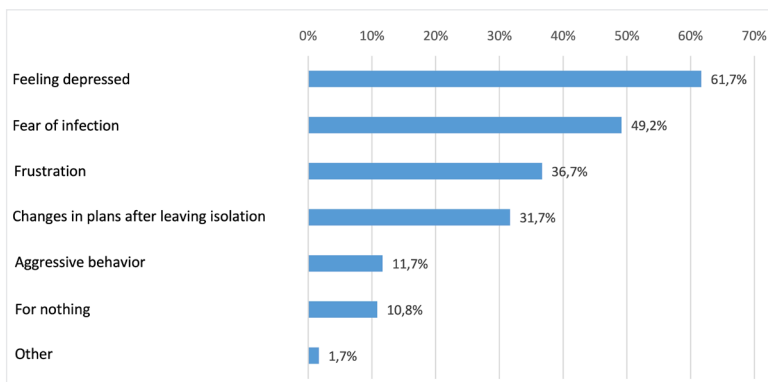
From the analysis of the data, it can be concluded that the effects of the Covid 19 pandemic are also a limitation – lack of pastoral service (every fifth person) and additional isolation (39%). The *other* answers included: *mental condition, limited walks, feeling of loneliness, closeness, mental and emotional depression, tightening of enforced regime, difficult bond with family and closest people.*

The greatest differences in opinions in this respect are noted across the classification subgroup (for the entire set  $\chi^2(6) = 13.097, p = 0.042^{**}$ ). Analyzing individual issues, it can be noticed that inmates from group R assessed the impact of the pandemic on working outside the facility (74% vs. 48%,  $p = 0.014^{**}$ ) and temporarily leaving the facility premises (55% vs. 33%) significantly higher than those in group P.,  $p = 0.024^{**}$ ). The opinions of inmates from the R-2 subgroup (79%) and P-1 (36%) on working outside prison are particularly different. Inmates from the P-1 subgroup (18%) were less likely than others to indicate leaving the unit temporarily. Within the sample, the impact of the pandemic on work outside prison was indicated especially by inmates due to crimes against property (78%) and the Act on Counteracting Drug Addiction (88%), and temporarily leaving the facility – due to crimes against the activities of state institutions and the Act on Counteracting Drug Addiction Drug addiction (3/4 of respondents with only one person with crimes against sexual

freedom and morals and 1/3 with crimes against health and life). Taking all the answers into account, gender does not significantly differentiate these opinions (for the entire set  $\chi^2 (6) = 9.966$ ,  $p = 0.126$ ), however, at the significance level of 0.10 it can be indicated that women indicated additional isolation significantly more often than men (54% vs. 35%,  $p = 0.087^*$ ) and lack of pastoral services (33% vs. 17%,  $p = 0.076^*$ ). As for education, they are also not significant for the entire set ( $\chi^2 (6) = 9.134$ ,  $p = 0.166$ ), and additional isolation was significantly more often indicated by people with secondary or higher education (56% vs. 32%,  $p = 0.017^{**}$ ). Similarly, in general, these opinions are not differentiated by the fact of participation in the program (for the entire set  $\chi^2 (6) = 9.198$ ,  $p = 0.163$ ), and additional isolation was significantly more often indicated by people participating in it (43% vs. 29%,  $p = 0.063^*$ ). Age did not differentiate these opinions (for the entire set  $\chi^2 (18) = 18.901$ ,  $p = 0.398$ ), similar conclusions apply to marital status (for the entire set  $\chi^2 (6) = 6.732$ ,  $p = 0.346$ ), place of residence (for the entire set  $\chi^2 (6) = 3.947$ ,  $p = 0.684$ ), time remaining until the end of isolation (for the entire set  $\chi^2 (18) = 18.484$ ,  $p = 0.424$ ).

Referring to the *soft* (emotional) consequences of COVID 19 for inmates, the main indications were a sense of depression (62% of respondents) and fear of infection (49%) – Figure 4.

**Fig. 4.** Consequences of the COVID 19 pandemic on people in isolation (in %,  $n = 122$ )



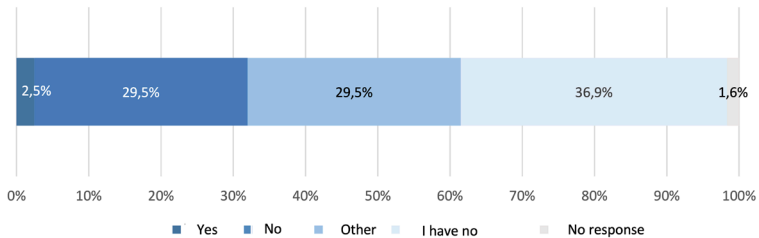
**Source:** own research

Nearly every third person indicated frustration 36.7% and a change of plans after leaving isolation 31.7%. However, aggressive behavior was rarely mentioned (12%). Importantly, only one in ten people did not notice any impact of the pandemic on the situation in this respect. The *other* answers included: *lack of family closeness, breakdown of ties, depression, fear of infecting the family, fear for loved ones, stress, fear for the family or whether anyone has been infected.*

These opinions were similar for women and men (for the entire set  $\chi^2(7) = 3.230$ ,  $p = 0.863$ ), for people of different ages (for the entire set  $\chi^2(21) = 21.304$ ,  $p = 0.441$ ), with different marital status (for whole set  $\chi^2(7) = 3.720$ ,  $p = 0.881$ ), participating or not in the program (for the whole set  $\chi^2(7) = 9.940$ ,  $p = 0.192$ ), with different time until the end of the sentence (for the whole set  $\chi^2(21) = 20.643$ ,  $p = 0.481$ ). In terms of education for the entire set  $\chi^2(7) = 10.359$ ,  $p = 0.169$ ; it can be seen that people with secondary or higher education more often indicated frustration (50% vs. 31%,  $p = 0.053^*$ ) and aggressive behavior (19% vs. 8%,  $p = 0.087^*$ ). Similar conclusions apply to the place of residence (for the entire set  $\chi^2(7) = 9.594$ ,  $p = 0.213$ ), with inmates from cities significantly more often than from rural areas indicating a change of plans after leaving isolation (35% vs. 13%,  $p = 0.037^{**}$ ) and frustration (41% vs. 22%,  $p = 0.092^*$ ). The classification subgroup significantly differentiates these opinions (for the entire set  $\chi^2(7) = 22.246$ ,  $p = 0.002^{***}$ ), in particular the feeling of depression (71% vs. 51%,  $p = 0.032^{**}$ ) and frustration (48% vs. 29%,  $p = 0.040^{**}$ ) and aggressive behavior (21% vs. 4%,  $p = 0.009^{***}$ ), which were indicated significantly more often by prisoners with the R subcategory. Especially R-2 shows significant differences compared to P – 1 from the point of view of feeling depressed (75% vs. 33%,  $p = 0.094^*$ ), while both of the largest R subgroups have a higher rating of frustration and aggressive behavior than the P group. Within the sample, depression was indicated especially by prisoners for crimes under the Act on Counteracting Drug Addiction (all of them) and against property (78% of them) against only  $\frac{1}{4}$  (one person out of four respondents) of prisoners for crimes against the activities of state and local government institutions. Prisoners for crimes against the family (half of them) indicated a change of plans after leaving isolation more often than others.

Only 2.5% of respondents believed that safety measures related to COVID 19 were sufficient in their penitentiary facility, but on the other hand *only* 30% had the opposite opinion (Figure 5).

**Figure 5.** Assessment of safety measures protecting against SARS-2 virus infection in the unit where inmates were staying (in %, n = 122)



**Source:** own research

The majority of respondents had no opinion on the assessment of the security measures used to protect against SARS-2 virus infection in the unit where the inmates were staying (37%). One third (30%), chose the answer *other*. Despite such a significant number of *other* answers, only two people detailed their statements, giving extremely different justifications: *safety measures against infection are minimized as much as possible!* vs. *are introduced exaggeratedly*. Within the sample, these safeguards were considered sufficient only by: men (3% of them), people aged 31-50 (3-4% of them), prisoners with secondary or higher education (9% of them), from the R subgroup – 1 (15% of them), who have no more than a year left until the end of their sentence (2-4% of them).

Those who are dissatisfied with security measures are more often women (40%) than men (27%), over 40 years old (approx. 1/3) than younger people (22-28%), none of the people who had more than 2 years left chose this answer until the end of the sentence, inmates from the P-2 and R-2 subgroups indicated it less often than others than P-1 and R-1. Apart from the above evaluation groups are analogous.

## SUMMARY

Man is a social being, as Elliot Aronson wrote (Arston, 1987). For the normal functioning of an individual, it is necessary to be around people and build relationships with them in all possible aspects. Only then is human existence complete.

People serving prison terms undoubtedly had to cope with restrictions on social contacts. During the Covid-19 pandemic, which covered the entire world, the type and frequency of interpersonal contacts and their universality have significantly degraded. This was particularly felt by people deprived of liberty for whom these contacts are particularly important in the process of social rehabilitation and readaptation (Walancik, 2023, pp. 190-200)

From March 19, 2020, visits to all penitentiary facilities were completely restricted. Prisoners' outside work was also significantly limited, with the exception of, among others, people producing masks and protective suits and working in the food industry (<https://www.gov.pl/web/smieszedliwosc/zdrowie-odwiedziny-we-wszystkich-zakladach-karnych>).

The respondents emphasize that isolation during the pandemic resulted in a lack of contacts – visits, and work outside the facility was limited – which resulted in limited relationships, causing depression, frustration, difficulties, and limited pastoral service.

The problem of contacts between prisoners and their families and loved ones has been, is and will remain crucial. What was disturbing was the fact that even though the government lifted the sanitary restrictions related to the SARS-CoV-2 virus pandemic, there were still restrictions on visits between prisoners and their relatives in prisons and detention centers. Only in response to numerous inquiries sent to the Ombudsman (Ombudsman) asking the Prison Service to consider the possibility of restoring the visitation rules from before the outbreak of the pandemic, a team was appointed by the Director General of the Prison Service to coordinate activities regarding visits.

Due to the epidemic situation in the country, a gradual decline in the number of SARS-CoV-2 coronavirus infections has been recorded, the publication of the regulation of the Council of Ministers of March 25, 2022 amending the regulation on the establishment of certain restrictions, orders and prohibitions in connection with the occurrence of the epidemic (Journal of Laws. U. 2022, item 473), the team

appointed by the Director General of the Prison Service to coordinate activities developed recommendations for visits, which became effective on March 26, 2022.

The research presented in the article is part of a research program relating to post-penitentiary assistance and social readaptation of people serving prison sentences. They were performed during the pandemic, so they were supplemented with a part about contacts with family and close people, it also focuses on the pandemic situation. The effect of the pandemic situation was a new relational reality between inmates and the outside world. She built a new image of contacts where face-to-face relationships gave way to telephones, letters and online platforms.

It is worth emphasizing that Pandemic prisoners started writing letters. Some learned to write, others started writing more often than before. Telephone conversations were extended, and the convicts used them in their entirety. Inmates began to use online conversations via Skype, a form of contact with Pandami that is rather overlooked. The topics discussed in the article indicate the complexity of the issue and its importance for the proper process of individual resocialization and social readaptation. According to Marek Konopczyński, the aim of resocialization education is to support socialization processes (Konopczyński, 2006 pp. 173 – 174), therefore, all activities related to creating opportunities for people serving prison terms during the pandemic and beyond, various forms of contact with family, loved ones, seem advisable. .All contacts with these people are a form of support in the process of post-penitentiary assistance and social readaptation, so that they can re-establish their roots in the social environment in their local communities (Walancik, 2023, pp. 137-155).



## REFERENCES

- Arston, E. (1987). *Człowiek istota społeczna*, Państwowe Wydawnictwo Naukowe, Warszawa.
- Babbie, E. (2008). *Podstawy badań społecznych*. Wydawnictwo Naukowe PWN.
- Bachar, O., Guetzkow, J. (2022). *Prison visits and inmates' emotions: a pretest-posttest study*. *Journal of Experimental Criminology*, 19 (12) 14 May.
- Duwe, G., Clark, V. (2011). *Blessed Be the Social Tie That Binds: The Effects of Prison Visitation on Offender Recidivism*. *Criminal Justice Policy Review*, XX(X), pp. 1–26.
- Ellis, D., Grasmick, H., Gilman B. (1974). *Violence in prisons: A sociological analysis*. *American Journal of Sociology*, 80, pp. 16–43.
- Frankfort-Nachmias, C., i Nachmias, D. (2001). *Metody badawcze w naukach społecznych*. Poznań: Wydawnictwo Zysk i S-ka.
- Goffman, E. (2011). *Instytucje totalne. O pacjentach szpitali psychiatrycznych i mieszkańcach innych instytucji totalnych*, Gdańskie Wydawnictwo Psychologiczne, Gdańsk. <https://www.gov.pl/web/sprawiedliwosc/ograniczenie-odwiedzin-we-wszystkich-zakladach-karnych> (dostęp: 20.04. 2024).
- Jarzębińska, A. (2023). *Kontakty osób odbywających karę pozbawienia wolności z członkami rodziny i innymi bliskimi*, *Polityka Społeczna* nr 11–12/2023, p. 35.
- Knapik J. Przybyła-Basista H. (2015). *Przerwana historia ojcostwa: jak uwięzieni mężczyźni postrzegają swoje ojcostwo?* *Chowanna*, 1, pp. 183–202.
- Klonowska, I. *Samotność w grupie. Rozważania na temat izolacji, braku relacji poczuciu osamotnienia w czasie Covid-19 na przykładzie badań przeprowadzonych w Wyższej Szkole Policji w Szczytnie*, *Journal of Modern Science*, Wyższa Szkoła Gospodarki Euroregionalnej im. Alcide De Gasperi w Józefowie; Józefów 2023, tom 3/52/2023, pp. 82-100.
- Klonowska, I., Walancik, M. (2023). *Korzystanie z pomocy postpenitencjarnej przez odbywających karę pozbawienia wolności i ich rodzin*. *Przegląd Policyjny*. 2023, Tom 152, nr 4, pp. 193-210.
- Konopczyński, M. (2006). *Metody twórczej resocjalizacji*, Wydawnictwo Naukowe PWN, Warszawa.
- Machel, H. (1994). *Wprowadzenie do pedagogiki penitencjarnej*, Wydawnictwo Uniwersytetu Gdańskiego, Gdańsk.
- Machel, H. (2003). *Więzienie jako instytucja karna i resocjalizacyjna*, Wydawnictwo ARCHE, Gdańsk.
- Murray, J. (2005). *The effects of imprisonment on families and children of prisoners*. In: A. Liebling & S. Maruna, eds., *The effects of imprisonment*. Collompton, Devon UK: Willan, pp. 442–492.
- Presser, J., and Blair, J. (1994), *Survey Pretesting: Do Different Methods Produce Different Results?*, in P.V. Marsden (ed.), *Sociological Methodology*, Vol. 24, Washington, DC: American Sociological Association, pp. 73-104.

- Rubacha, K. (2011). *Metodologia badań nad edukacją*. Warszawa: Oficyna Wydawnicza Łośgraf.
- Miszewski K. Miałkowska-Kozaryna M. (2023). *Praca a funkcjonowanie psychiczne skazanych na 25 lat pozbawienia wolności*, Journal of Modern Science Tom 4/53/2023, p.137.
- Szczepański, J. (1972). *Elementarne pojęcia socjologii*. Wydawnictwo Naukowe PWN, Warszawa.
- Walancik-Ryba, K. (2021), *Family in Poland. Social and Legal Contexts*, Logos Verlag, Berlin.
- Walancik, K. (2023), *Communication in emergency situations – the covid 19 pandemic in foster families. Organization and principles of operation*, Journal of Vasyl Stefanyk Precarpathian National University, <http://journals.pnu.edu.ua>, Vol. 10, No. 3 (2023), 24-32UDC 37.064-058.855]:578.834covid-19] (477),pp. 190 – 200, doi: 10.15330/jpnu.10.3.24 – <https://journals.indexcopernicus.com/search/article?articleId=3915210>
- Walancik, M. (2023). Świadomość skazanych w zakresie pomocy postpenitencjarnej, Resocjalizacja Polska 26/2023 s.137-155, ISSN 2081-3767, e-ISSN 2392-2656 DOI 10.22432/pjsr.2023.26.10<http://resocjalizacjapolska.pl/index.php/rp/article/view/484/542>

## **LEGAL ACTS**

- Obwieszczenie Marszałka Sejmu Rzeczypospolitej Polskiej z dnia 16 listopada 2022 r., w sprawie ogłoszenia jednolitego tekstu ustawy – Kodeks Karny Wykonawczy, Dz.U. 2023 poz. 1.
- Rozporządzenie Ministra Zdrowia z 20.03.2020 r. w sprawie ogłoszenia na obszarze RP stanu epidemii, (Dz.U. 2020, poz. 491).
- Rozporządzenie Rady Ministrów z dnia 25 lutego 2022 r. w sprawie ustanowienia określonych ograniczeń, nakazów i zakazów w związku z wystąpieniem stanu epidemii (Dz. U. 2022, poz. 473).